

# CoJet Plus -2512



## Flatbed UV Digital Inkjet Printer

## 平台式UV噴繪機

Equipped with Konica Minolta KM 1024i print head

搭載 Konica Minolta KM 1024i print head

*High Productivity*



### 應用產業 Application Industries

傢俱

Furniture

建材

Building Material

銘牌展架

Display

室內裝潢

Interior Decoration

玻璃加工

Glass

客製化商品

Customization

- 噴印範圍達2500mm x 1250mm，除了針對大型板材進行噴印，也可搭配治具進行小尺寸客製化商品噴印
- 搭載KM1024iMHE 13皮升高速噴頭，搭配6色噴印，圖像解析度高達1440dpi
- 工作檯面採用特殊高壓面板，耐重可達500Kg，強力真空檯面設計，確保材料平貼在檯面上，不易變形
- 重復噴印精度高，可於同工件進行多次噴印
- 獨立負壓系統設計，不受外界氣源變動影響，確保長時間噴印品質
- 特殊的噴頭排列方式，使專色與彩色可以在同一次噴印工作中完成，並且保持與純噴印彩色相同的產能速度
- 尚有多種不同的檯面尺寸選購，以達成2800x1250、1600x3100、1860x3700、2500x3100、2500x3700 mm 等不同大小尺寸的噴印
- 白墨自主循環系統，提高供墨順暢性，延長噴頭壽命
- 自動批次集印功能，結合多元噴印工序，達到量產化的目標

[www.anderson.com.tw](http://www.anderson.com.tw)

- 2500mm x 1250mm print area suitable for large format printing on large size of substrate, and also print small piece of customized products
- Equipped with KM1024iMHE 13pl high speed print head combine with 6 color printing, resolution up to 1440dpi
- The special design of vacuum working table can support the weight of substrate up to 500Kg, strong vacuum system can hold material stationary on the flat surface
- High repeatability accuracy ensuring accurate registration for multiple over-prints or multiple boards
- Individual negative pressure system, prevent the deviation from air source unstable can produce much stable printing result
- Unique print heads layout enable print spot and color at same job also keep same throughput with color only printing (KCMYcm+2W configuration)
- Optional table size for different print size: 2800x1250, 1600x3100, 1860x3700, 2500x3100 and 2500x3700 mm
- Autonomous white circling system, keep favorable printing and extend the print head life
- Automatic batch printing function, combined with multiple printing process, to enable mass production

## 多樣化的特別色噴印模式

### Diverse spot color printing mode

- 白色 + 彩色 (White Before)
- 彩色 + 白色 (White After)
- 立體堆疊 (3D)



白色 + 彩色  
(White Before)



彩色 + 白色  
(White After)



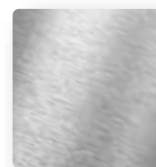
立體堆疊  
(3D)

## 可噴印架橋

### Printable Primer

可噴印架橋的選配，大幅提升UV墨水噴印後的附著性，也能保有未噴印區域材料的原始特性，並減少架橋劑的耗用

Optional Primer, which can increase the adhesion between UV ink and many substrate. It can retain material's original surface on unprinted area, also reduce the primer waste.



原始材料  
(Raw materials)



局部噴印架橋  
(Portional printing primer)



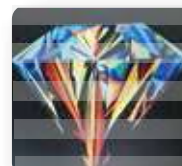
噴印彩色  
(Color printing)

## Anderson 噴印優化模式

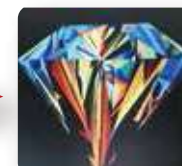
### Anderson optimize drop arrangement

特殊並優化的佈點方式，有效消除雙向亮霧斑道痕跡，呈現高品質噴印效果

Optimize drop arrangement function reduce the bi-direction printing light banding, provide better print quality and improve production speed.



優化功能開啟前  
(Before optimizing)



優化功能開啟後  
(After optimizing)

## 板邊噴印功能

### Patterned Panel edge printing function

獲得專利的皮邊噴印功能，最大2500mm寬，1000mm高的門板或櫥櫃門板的板邊噴印變得可能

Patterned panel edge printing function enable max 2500mm wide, 1000mm height door or cabinet panel edge printing.



## 獨特軟體功能

### Software

- 掉點補償功能：當遇到少量噴嘴堵塞的情況，可透過掉點補償功能，維持噴印品質，延長噴頭使用壽命
- 接續噴印功能：當機台發生無預警停機時，機台提供接續噴印功能，略過已噴印的部分繼續完成噴印，有效減少時間與材料的損失
- 自動批次集印功能：可藉由組合設定，規劃各式特殊噴印工序
- **Missing Nozzle compensation function:** keep the print quality and extend the print head lifetime if some nozzle were clogged.
- **Skip Band function:** When machine stops printing due to unknown factors, machine counts to where it was stopped and continue printing, therefore reduce ink and material waste.
- **Automatic batch printing function:** which can be used to plan various special printing processes by setting.



## CoJet Plus -25 12

Print Heads	Industrial Drop-On-Demand Inkjet Head			
噴頭技術	工業級壓電式噴頭			
Drop Volume	13pl			
噴點大小	13pl			
Print Color	K, C, M, Y, Lc, Lm, W (Primer, Varnish optional)			
墨水顏色	K, C, M, Y, Lc, Lm, W (Primer, Varnish optional)			
Print Area	2500 mm x 1250 mm (98.4 inch x 49.2 inch)			
噴印範圍	2500 mm x 1250 mm (98.4 inch x 49.2 inch)			
Max. Thickness	100 mm (3.94 inch)			
最大材料厚度	100 mm (3.94 inch)			
Max. Loading Capacity	500 Kg			
最大材料重量	500 Kg			
Print Speed (m <sup>2</sup> /hr)	(KCMYLCmW)x2		KCMYLCm+2W	
噴印速度 (m <sup>2</sup> /hr)	Color Only 彩色	Color + White 彩 + 白	Color Only 彩色	Color + White 彩 + 白
Draft Mode	167.8	154.8	89.6	85.1
Express Mode	84	43.6	45.9	43.6
Standard Mode	52.5	27.1	28.5	27.1
Quality Mode	35.3	18.2	19.1	18.2
3D Mode	---	10.7	---	10.7
Ink Type	UV Curable ink			
墨水類型	UV 固化墨水			
Image Interface	Ethernet 100/1000 Base T			
圖檔傳輸界面	乙太網路 100/1000 Base T			
Floor Area	4450 mm x 3325 mm x 2000 mm			
佔地面積	4450 mm x 3325 mm x 2000 mm			
Machine Weight	2500 Kg			
機械重量	2500 Kg			
Operation Environment	Temperature:15~30°C(59~86°F), Humidity:50~70% RH			
工作環境	Temperature:15~30°C(59~86°F), Humidity:50~70% RH			
Power Requirement	AC 220V, 50/60Hz, Single Phase			
電力需求	AC 220V, 50/60Hz, 單相			
Air Source	No Need			
氣源需求	No Need			

恩德科技股份有限公司 Anderson Industrial Corp.

總公司 11155 台北市士林區中山北路六段88號5樓  
5F., No. 88, Sec. 6, Zhongshan N. Rd., Shilin Dist., Taipei City 11155, Taiwan  
Tel +886-2-28376866 Fax +886-2-28320866

後龍工廠 35651 苗栗縣後龍鎮中華路1498號  
No.1498, Zhonghua Rd., Houlong Township, Miaoli County 35651, Taiwan  
Tel +886-37-726876 Fax +886-37-727727

service@anderson.com.tw

