

## Flatbed UV Digital Inkjet Printer

## 平台式UV噴繪機

Equipped with Konica Minolta KM 512i print head

搭載 Konica Minolta KM 512i print head

*Professional  
Small Model*



### 應用產業 Application Industries

傢俱

Furniture

建材

Building  
Material

銘牌展架

Display

室內裝潢

Interior  
Decoration

玻璃加工

Glass

客製化  
商品

Customization

- 噴印範圍1250mm x 1250mm · 適合大部分材料噴印
- 搭配治具更適合小尺寸客製化禮贈品量產
- 搭載KM512ISHB-M 6皮升噴頭 · 最高噴印解析度可達1440dpi
- 工作檯面採用特殊高壓面板 · 不反射UV · 不易變形
- 重複噴印精準度高 · 可於同一工作進行多次不同噴印效果 · 提升產品獨特性
- 獨立負壓系統 · 不受外界氣源變動影響 · 長時間噴印品質穩定
- 白墨自主循環系統 · 提高供墨順暢性 · 延長噴頭壽命
- 自動批次集印功能 · 結合多元噴印工序達到量產化的目標

[www.anderson.com.tw](http://www.anderson.com.tw)

- 1250mm x 1250mm print area suitable for mostly material size for printing
- Combine with jig can used for small piece of customize product production
- Equipped with KM512ISHB-M 6pl print head, the highest resolution can achieve up to 1440dpi
- Special design working table can reduce UV reflection and not easy deformed
- High repeat printing accuracy, same substrate can be printed multiple printing effect to create special printing product
- Standalone negative pressure system, prevent the deviation from air source unstable to keep stable printing quality
- Autonomous white circling system, keep favorable printing and extend the print head life
- Automatic batch printing function, combined with multiple printing process, to enable mass production

## 多樣化的特別色噴印模式

### Diverse spot color printing mode

- 白色 + 彩色 (White Before)
- 彩色 + 白色 (White After)
- 立體堆疊 (3D)



白色 + 彩色  
(White Before)



彩色 + 白色  
(White After)



立體堆疊  
(3D)

## 可噴印架橋

### Printable Primer

可噴印架橋的選配，大幅提升UV墨水噴印後的附著性，也能保有未噴印區域材料的原始特性，並減少架橋劑的耗用

Optional Primer, which can increase the adhesion between UV ink and many substrate. It can retain material's original surface on unprinted area, also reduce the primer waste.



原始材料  
(Raw materials)



局部噴印架橋  
(Portional printing primer)



噴印彩色  
(Color printing)

## Anderson 噴印優化模式

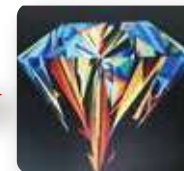
### Anderson optimize drop arrangement

特殊並優化的佈點方式，有效消除雙向亮霧斑道痕跡，呈現高品質噴印效果

Optimize drop arrangement function reduce the bi-direction printing light banding, provide better print quality and improve production speed.



優化功能開啟前  
(Before optimizing)



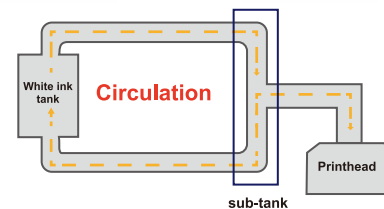
優化功能開啟後  
(After optimizing)

## 白墨自動循環功能

### Automatic white ink circulation function

停機時能維持墨水的流暢性，降低噴頭因墨水的沉澱而堵塞的機率，延長噴頭使用壽命及噴印品質

White ink circulation periodically during shutdown, reduce the possibility of nozzle clogging due to ink settle, extend print head's lifetime and printing quality.



## 獨特軟體功能

### Software

- 掉點補償功能：當遇到少量噴嘴堵塞的情況，可透過掉點補償功能，維持噴印品質，延長噴頭使用壽命
- 接續噴印功能：當機台發生無預警停機時，機台提供接續噴印功能，略過已噴印的部分繼續完成噴印，有效減少時間與材料的損失
- 自動批次集印功能：可藉由組合設定，規劃各式特殊噴印工序
- **Missing Nozzle compensation function:** keep the print quality and extend the print head lifetime if some nozzle were clogged.
- **Skip Band function:** When machine stops printing due to unknown factors, machine counts to where it was stopped and continue printing, therefore reduce ink and material waste.
- **Automatic batch printing function:** which can be used to plan various special printing processes by setting.



# FJ-1212

Print Heads 噴頭技術	Industrial Drop-On-Demand Inkjet Head 工業級壓電式噴頭				
Drop Volume 噴點大小	6pl				
Print Color 墨水顏色	K, C, M, Y, W (Primer, Varnish optional)				
Print Area 噴印範圍	1250 mm X 1250 mm (49.2 inch X 49.2 inch)				
Max. Thickness 最大材料厚度	100 mm (3.94 inch)				
Max. Loading Capacity 最大材料重量	250 Kg				
Print Speed 噴印速度	Color Only (彩色)		Color+Spot (彩色+特別色)		
	m <sup>2</sup> /hr (Sqf/hr)	Time to Max Area	m <sup>2</sup> /hr (Sqf/hr)	Time to Max Area	
	Draft Mode	25.2 (271)	3' 43"	12.7 (137)	7'20"
	Express Mode	18.4 (199)	5' 03"	9.1 (98)	10'13"
	Standard Mode	11.7 (126)	7'58"	5.8 (62)	16'10"
Quality Mode	8.8 (95)	10'32"	4.3 (46)	21'33"	
3D Mode	---	---	2.4 (26)	53'57"	
Ink Type 墨水類型	UV Curable ink UV 固化墨水				
Image Interface 圖檔傳輸界面	Ethernet 100/1000 Base T 乙太網路 100/1000 Base T				
Floor Area 佔地面積	2780 x 3255 x 1500 mm (9.12 x 10.68 x 4.92 ft.)				
Machine Weight 機械重量	1000 Kg				
Operation Environment 工作環境	Temperature:15~30°C(59~86°F), Humidity:50~70% RH				
Power Requirement 電力需求	AC 220V, 50/60Hz, Single Phase				
Air Source 氣源需求	AC 220V, 50/60Hz, 單相 No Need				

恩德科技股份有限公司 Anderson Industrial Corp.

總公司 11155 台北市士林區中山北路六段88號5樓  
5F., No. 88, Sec. 6, Zhongshan N. Rd., Shilin Dist., Taipei City 11155, Taiwan  
Tel +886-2-28376866 | Fax +886-2-28320866

後龍工廠 35651 苗栗縣後龍鎮中華路1498號  
No.1498, Zhonghua Rd., Houlong Township, Miaoli County 35651, Taiwan  
Tel +886-37-726876 | Fax +886-37-727727

service@anderson.com.tw

